



**Coordinated Highway Assistance
& Maintenance Program**

NOCoe Talking TIM Webinar

October 28, 2020

Brian Purvis, PE AECOM

Agenda

- **CHAMP Queue Protection Initiatives**
 - **What we can do in the field**
 - **What can we do with technology**
 - **What can we do with our partners**



Protecting the Queue - Upstream



Protecting the Queue

- Protect the Scene OR Protect the Queue
- The Chicken? OR The Egg?



Protecting the Queue

- Protect the Scene OR Protect the Queue
 - First to Arrive
 - Block for Others
 - Provide TTC
 - Needed for Coordination
 - Needed for Clearance



Protecting the Queue

- Protect the Scene AND Protect the Queue
 - First to Arrive
 - Block for Others
 - Provide TTC
 - Needed for Coordination
 - Needed for Clearance
 - Called by Others
 - Traffic Slowing
 - Can't See the End
 - Maps Show Backups
 - Speed Differentials



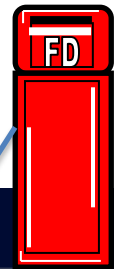
Using Technology

- 511ga.gov
- Waze.com
- Others



Advance Warning Initiatives

- How to determine where the backup ends
 - www.511ga.org



The screenshot shows the 511GA website interface. At the top, there are navigation tabs: Weather, CONSTRUCTION (highlighted), Alerts/Events/Info, and Info. Below these is a 'Map Legend' section with various layers checked, including Traffic Speeds Layer, Construction, Major Incidents, and Cameras. The main map area shows a road network with a red and yellow highlighted section indicating a traffic backup. A blue arrow points from the 'FD' sign to the start of the backup, and another blue arrow points from the 'LE' sign to the end of the backup. The map includes labels for roads like Teamon Rd, Lesfer Mill Rd, and Steeles Mill. A 'NAVIGATOR' widget in the top right corner shows the last map update as 12:06 AM. At the bottom left, there is a sign-up prompt for My511GA alerts.

State Farm

Do a Discount Double Check[®] and get discounts up to 40% on auto insurance.

[Get A Quote ▶](#)

Advance Warning Initiatives

- How to determine where the backup ends
 - www.511ga.org, use CCTV, DMS, Speed, Waze to determine advance warning location

511GA

Weather
CONSTRUCTION
 Alerts/Events/Info
 Info

I-75 NB : AT MONROE WEIGH STA (MI 188.5)
 (last updated 08/15 at 12:20 AM)

FOR "CHAMP"
 ROADSIDE ASSISTANCE
 CALL 511 / 6AM - 10PM

Map Legend
 Sign up for My511GA alerts!

Register for a free account today! Registration is optional and we do not share your private information with anyone. Features include: email and text alerting and ability to save favorite maps and cameras.

Map Views Incidents Cameras Signs Corridors Trip Times Extras Login

Camera Viewer

Do a Discount Double Check® and get discounts up to 40%* on auto insurance. **State Farm**
 *Not available in all states. Get A Quote ▶

HENRY CAM 001
 I-75 S @ EXIT 216/SR 155

511 Travel Info

Camera Info

Direction:
 Traffic closest to the camera is headed South.

Route:
 I-75 (mile 0.0)

Cross Street:
 SR 155

Actions

Favorite Status:
 Please log in or create an account to favorite cameras.

Choose another road

PRESET37

I-75: SR 155 (mile 0.0) I-75: BEFORE CMS 701 I-75: BEFORE SR 155 (mile

NAVIGATOR
 Last map update - 12:06 AM

Mapbox
 © Mapbox © OpenStreetMap Improve this map Permalink

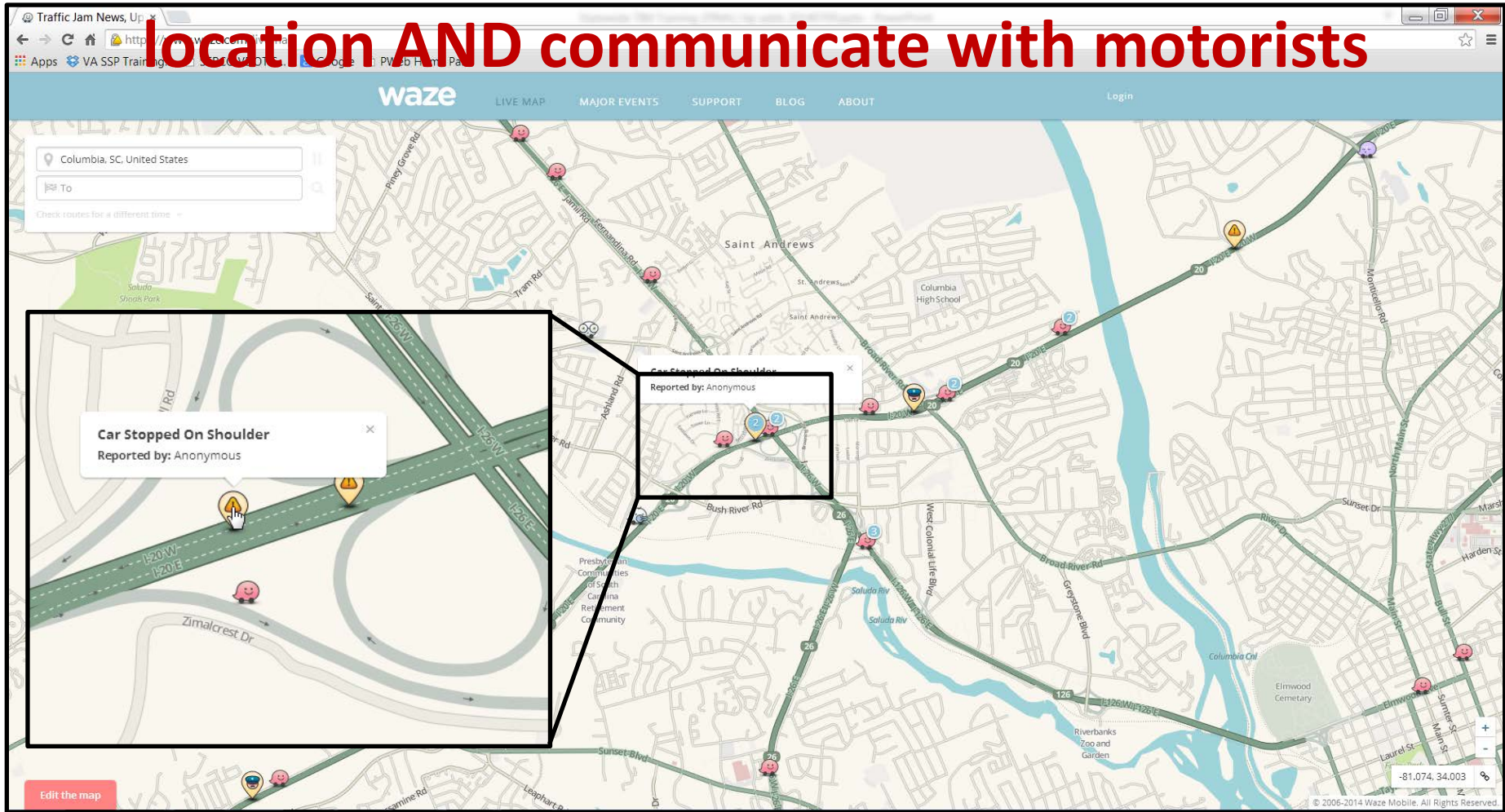
State Farm

Do a Discount Double Check® and get discounts up to 40%* on auto insurance.

Get A Quote ▶

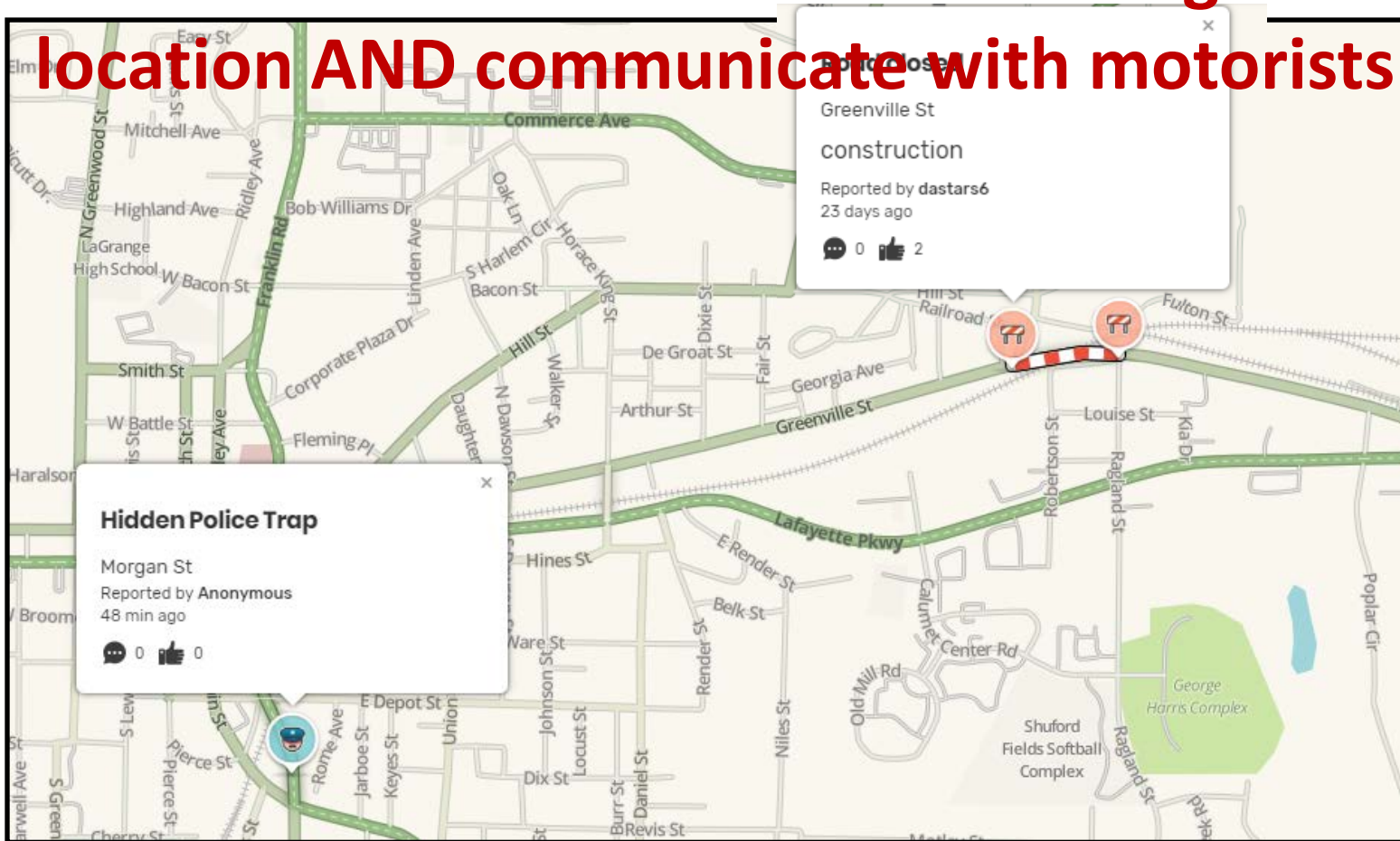
Advance Warning Initiatives

- **WAZE to determine advance warning location AND communicate with motorists**



Advance Warning Initiatives

- **WAZE to determine advance warning location AND communicate with motorists**

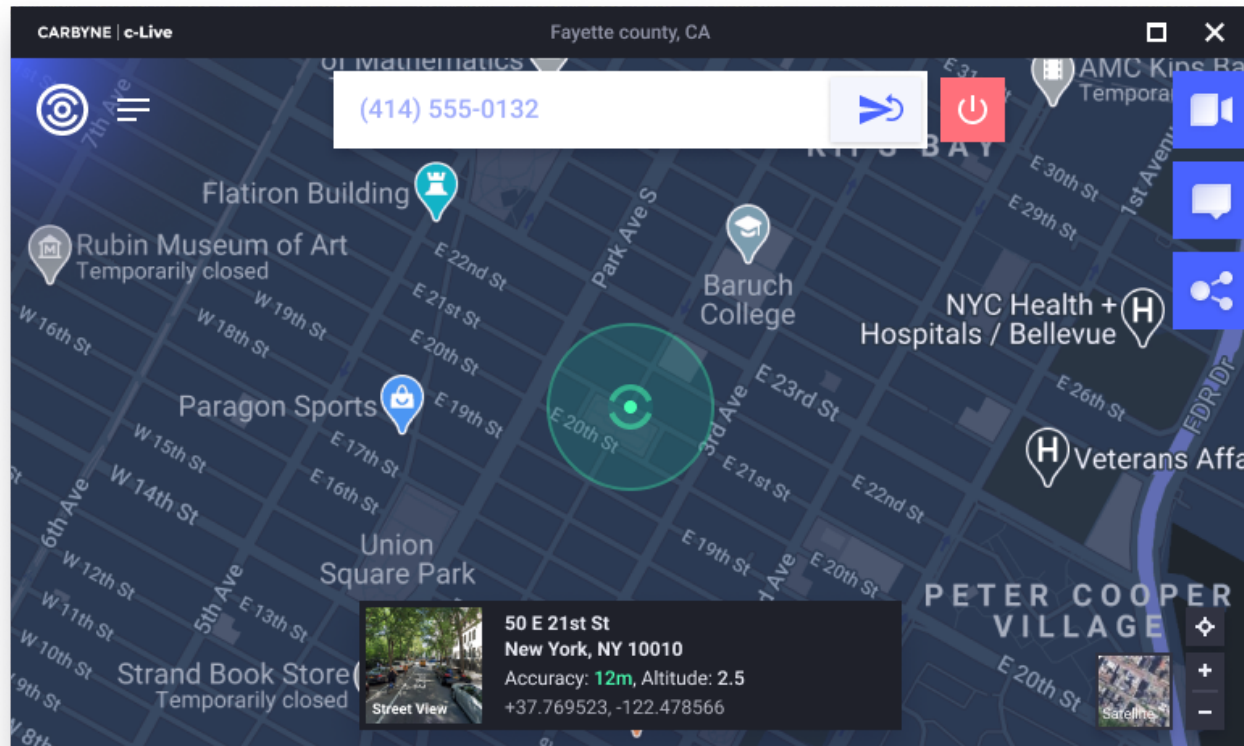


Advance Warning Initiatives

- Other Initiatives

- Carbyne C-Lite

- Allows GDOT to immediately geolocate a caller by using their mobile device's GPS, barometer, altimeter Wifi and Bluetooth to get an accurate and instantaneous location.



Advance Warning Initiatives

- Other Initiatives
 - Carbyne C-Lite – found the motorist
 - Verizon Networkfleet
 - Allows GDOT to continually track the CHAMP responders via GPS



Networkfleet Map Vehicle Fleet Analytics Reports Admin Support

VEHICLE LIST Overview Map Location Detail Track Vehicles

View by: Label Refine: Select a Vehicle

Map > Overview Map

Launch Full Screen Map

205 = 37232

Driver:	BOATRIGHT, MACK
Date:	12/18/19 9:24 PM
Location:	GA-404 W, Dublin, GA 31021 US
Speed:	75 mph (Current) 75 mph (Max)
Posted Speed:	70 mph
Direction:	Heading W
Odometer:	25,758.6 mi

© 2019 Verizon - © MAPQUEST, © MAPBOX, © OPENSTREETMAP | TERMS

MAP CONTROLS

© 2019 Verizon. All Rights Reserved. | release/2019.07.4

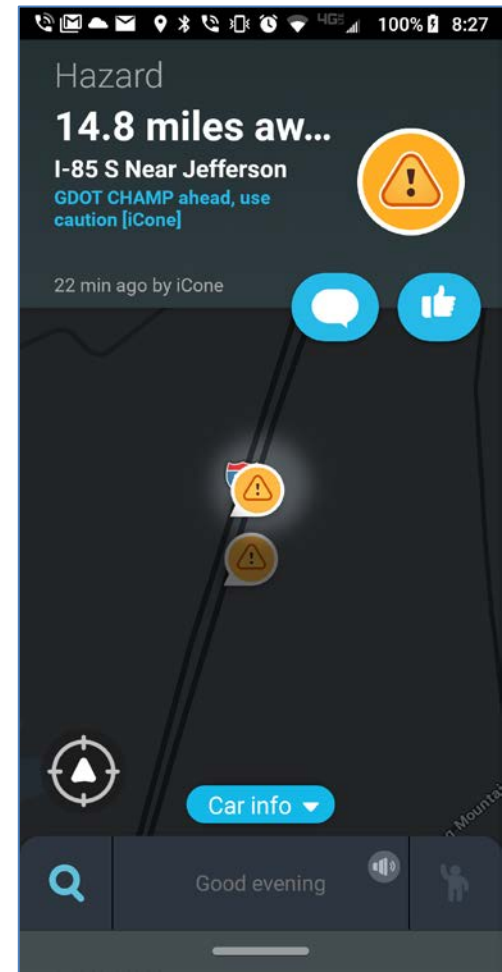
Advance Warning Initiatives

- Other Initiatives
 - Carbyne C-Lite – found the motorist
 - Verizon Networkfleet – found the responder
 - 360NS Pilot with iCone technology
 - Allows GDOT to quickly notify oncoming traffic of work zones and other stationary situations via Waze
 - Solar powered



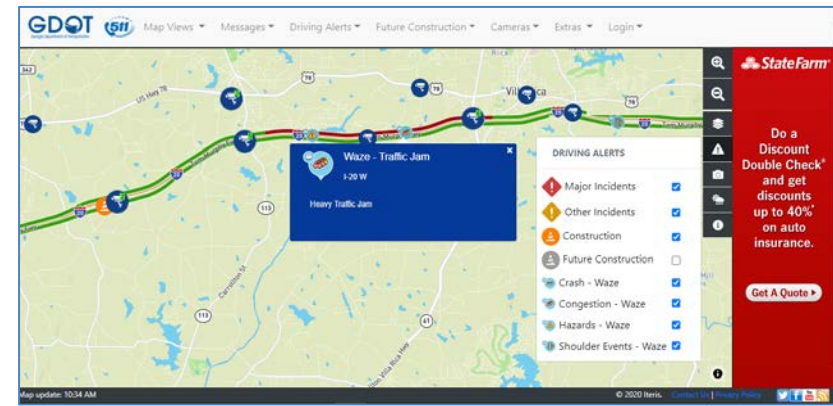
Advance Warning Initiatives

- Other Initiatives
 - Carbyne C-Lite – found the motorist
 - Verizon Networkfleet – found the responder
 - 360NS Pilot – found the environment
 - HAAS Pilot
 - Allows GDOT to quickly notify oncoming traffic of response vehicles via Waze
 - Tied to truck lights or other device



Advance Warning Initiatives

- Other Initiatives
 - Carbyne C-Lite – found the motorist
 - Verizon Networkfleet – found the responder
 - 360NS Pilot – found the environment
 - HAAS Pilot – found the incident
 - 511 and Waze integration
 - Allows GDOT to monitor their ITS along with what the public is reporting to each other



Advance Warning Initiatives

- Other Initiatives

The screenshot shows the GDOT website interface. At the top, there are navigation links: Map Views, Messages, Driving Alerts, Future Construction, Cameras, Extras, and Login. The main content area features a map of a region including US Hwy 78, I-20, and Tom Murphy Fwy. A blue pop-up window titled 'Waze - Traffic Jam' is overlaid on the map, indicating a 'Heavy Traffic Jam' on 'I-20 W'. To the right of the map is a 'DRIVING ALERTS' sidebar with a list of alert types and their status:

DRIVING ALERTS		
	Major Incidents	<input checked="" type="checkbox"/>
	Other Incidents	<input checked="" type="checkbox"/>
	Construction	<input checked="" type="checkbox"/>
	Future Construction	<input type="checkbox"/>
	Crash - Waze	<input checked="" type="checkbox"/>
	Congestion - Waze	<input checked="" type="checkbox"/>
	Hazards - Waze	<input checked="" type="checkbox"/>
	Shoulder Events - Waze	<input checked="" type="checkbox"/>

At the bottom right, there is a red State Farm advertisement with the text: 'Do a Discount Double Check® and get discounts up to 40%* on auto insurance.' and a 'Get A Quote' button. The footer contains the text 'Map update: 10:34 AM', '© 2020 Iteris.', and links for 'Contact Us | Privacy Policy' along with social media icons for Twitter, Facebook, YouTube, and RSS.

Advance Warning Initiatives

- Other Initiatives
 - Carbyne C-Lite – found the motorist
 - Verizon Networkfleet – found the responder
 - 360NS Pilot – found the environment
 - HAAS Pilot – found the incident
 - 511 and Waze integration – informed the motorists
 - GA Alert / IPAWS – inform the public of major incidents
 - Reverse 911 alert system for major incidents
 - ipaws@fema.dhs.gov to get MOU
 - Alerts are pulled from the Emergency Alert System (EAS) and Wireless Emergency Alerts (WEA).
 - Alerts can be filtered based on geographical area, event, and other factors applicable to the audience.
 - <https://www.fema.gov/fact-sheet/ipaws-all-hazards-information-feed>

Advance Warning Initiatives

- Working With Others
 - Develop TIM Teams EVERYWHERE, Including Rural
 - Train on Protecting the Queue
 - Track Secondary Crashes and Report Monthly
 - Train, Train, Train
 - Beg, Borrow and Steal !!!

Need More Info?

<http://www.dot.ga.gov/DS/Travel/CHAMP>

Chad Hendon, GDOT TMC Operations Manager

404-635-2810

chendon@dot.ga.gov

Brian Purvis, PE, AECOM CHAMP PM

470-509-9502

brian.purvis@aecom.com

